

PART OF S.W. 1/4 OF  
SECTION 10, T.5N., R.1 W., S.L.B. & M.

97-2

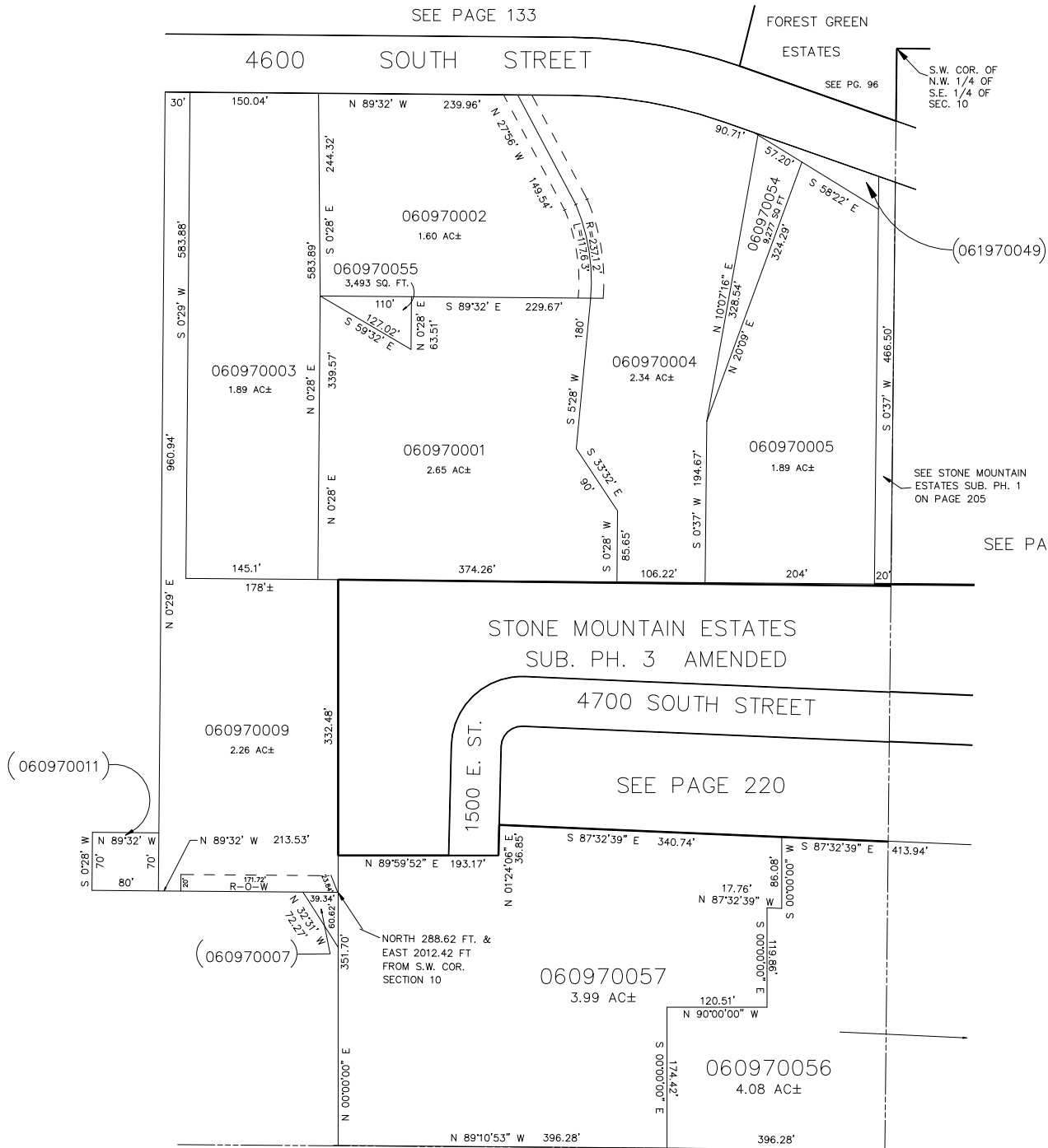
TAXING UNIT: 25, 336

IN OGDEN CITY  
SCALE 1" = 100'

SEE PAGE 133

SEE PAGE 97

SEE PAGE 96



SEE BOOK 7, PAGE 2